


How to Login as Jira Service Desk Customer

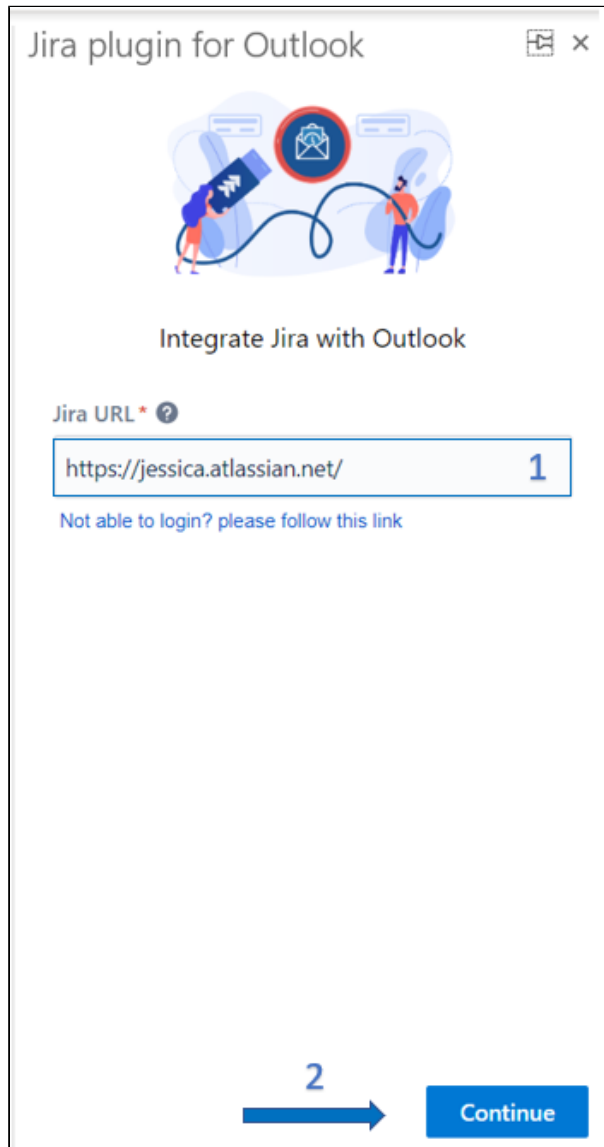
Feature Overview

In this guide, you will learn how to connect to your Jira instance and login as a **Jira Service Desk Customer** into the app.

Quick Steps

 The login steps will differ for the different hosting types: Cloud and Server.

- Enter your **Jira URL**
- Click on **Continue**



Jira plugin for Outlook

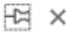
Integrate Jira with Outlook


Jira URL * [?](#)

[Not able to login? please follow this link](#)


[Continue](#)

- Enter your **Email Address - Username**
- Click on **Continue**

Jira plugin for Outlook 



Integrate Jira with Outlook

Jira URL * 


[Not able to login? please follow this link](#)


Email Address *

 3


4 

- Enter your **Password**
- Click on **Continue**

Jira plugin for Outlook 




Integrate Jira with Outlook

Jira URL * 

[Not able to login? please follow this link](#)

Username *

Password *

6  **Continue**

- Enter your **Jira URL**
- Click on **Continue**

Jira plugin for Outlook



Integrate Jira with Outlook

Jira URL *

1

[Not able to login? please follow this link](#)

2



Continue

- Click on **Continue as Customer**

Jira plugin for Outlook



Integrate Jira with Outlook

Jira URL *

[Not able to login? please follow this link](#)

Your Jira Instance includes Jira Service Management Jira Plugin for Outlook now supports logging in as customer, allowing them to raise requests, replay to agents, add an attachment, view related requests all from their inbox. Click on "Continue as Customer" to login to Customer Portal, or click on "Continue" to login as Jira user

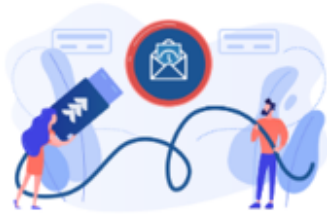


[Continue as customer](#)

[Continue](#)

- Enter your **Username**
- Enter your **Password**
- Click on **Continue**

Jira plugin for Outlook



Integrate Jira with Outlook

Jira URL *

https://infosysta-add.com/

Not able to login? please follow this link

Username *

Jessicaa

4

Password *

.....

5

6



Continue