

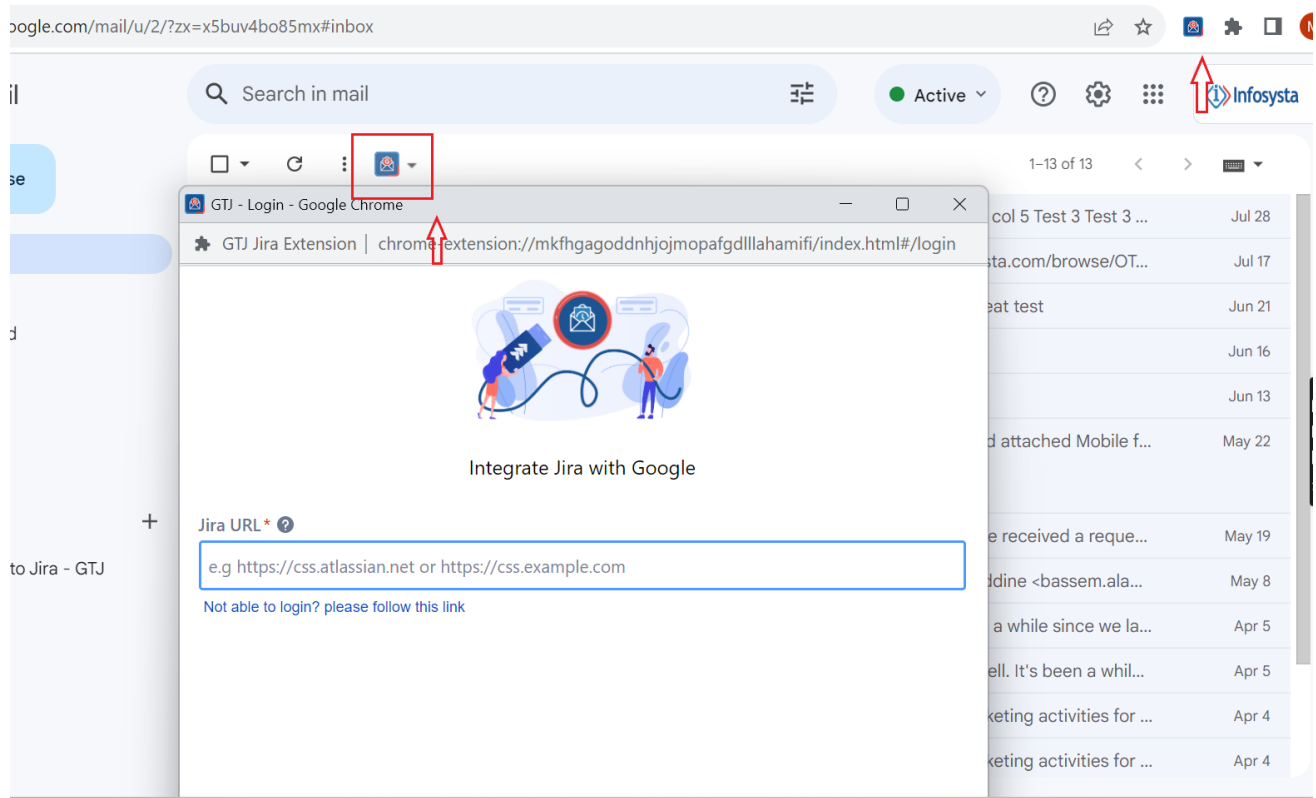
How to Connect - Jira Extension in Chrome (Beta)

Overview

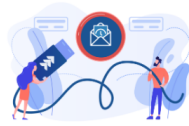
Learn how to connect the GTJ Chrome extension to Jira.

Quick Steps

- Click on the GTJ Chrome extension icon from **Gmail**, **Google Drive** or **Calendar**
- Select any option and this screen will appear



- Enter your **Jira Cloud instance URL**, then click on **Next**



Integrate Jira with Google

Jira URL * ?

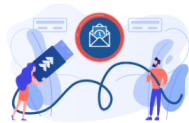
https://jessica12.atlassian.net/

Not able to login? please follow this link



Continue

- Enter you email address and click on **Next**



Integrate Jira with Google

Jira URL * ?

https://jessica12.atlassian.net/

Not able to login? please follow this link

Email Address *




Continue


- Enter your **API Token**, or click on **Generate API Token** to get a new one
- Click on the **Login** button

GTJ - Login - Google Chrome

GTJ Jira Extension | chrome-extension://mkfhgagoddnhjojmopafgdllahamifi/index.html#/login



Integrate Jira with Google



Jira URL * 

[Not able to login? please follow this link](#)


Email Address *

API Token *

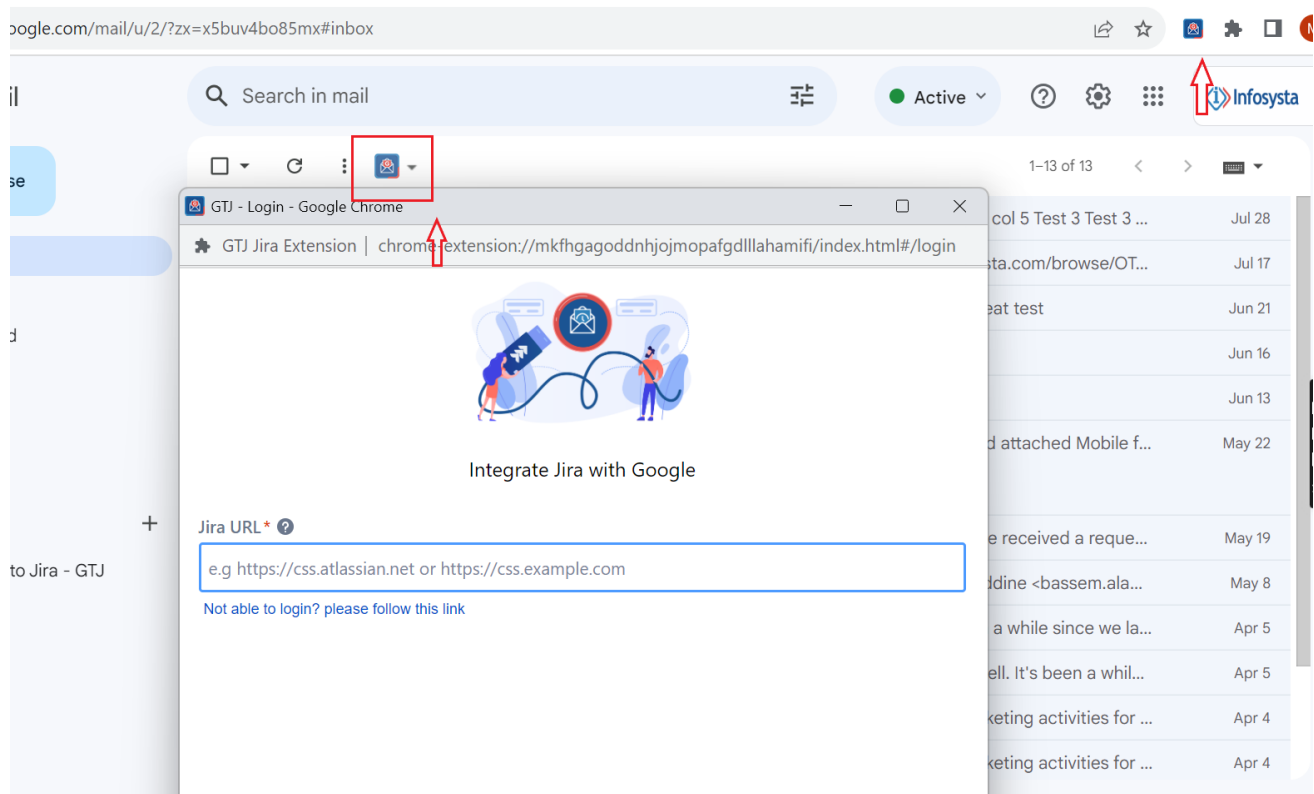
[Generate API Token](#)

[Continue](#)

 Great, you are now connected to Jira and ready to explore [GTJ's features!](#)

- Click on the GTJ Chrome extension icon from **Gmail**, **Google Drive** or **Calendar**
- Select any option and this screen will appear




- Enter your **Jira Server URL**


- Click on **Continue**

GTJ - Login - Google Chrome

GTJ Jira Extension | chrome-extension://mkfhgagoddnhjojmopafgdllahamifi/index.html#/login



Integrate Jira with Google

Jira URL* 

https://infosysta-add.com/


Not able to login? please follow this link

Continue


- You'll be Prompted to continue as **Agent** or **Customer**

GTJ - Login - Google Chrome

GTJ Jira Extension | chrome-extension://mkfhgagoddnhjojmopafgdllahamifi/index.html#/login




Integrate Jira with Google

Jira URL* 

https://infosysta-add.com/

Not able to login? please follow this link




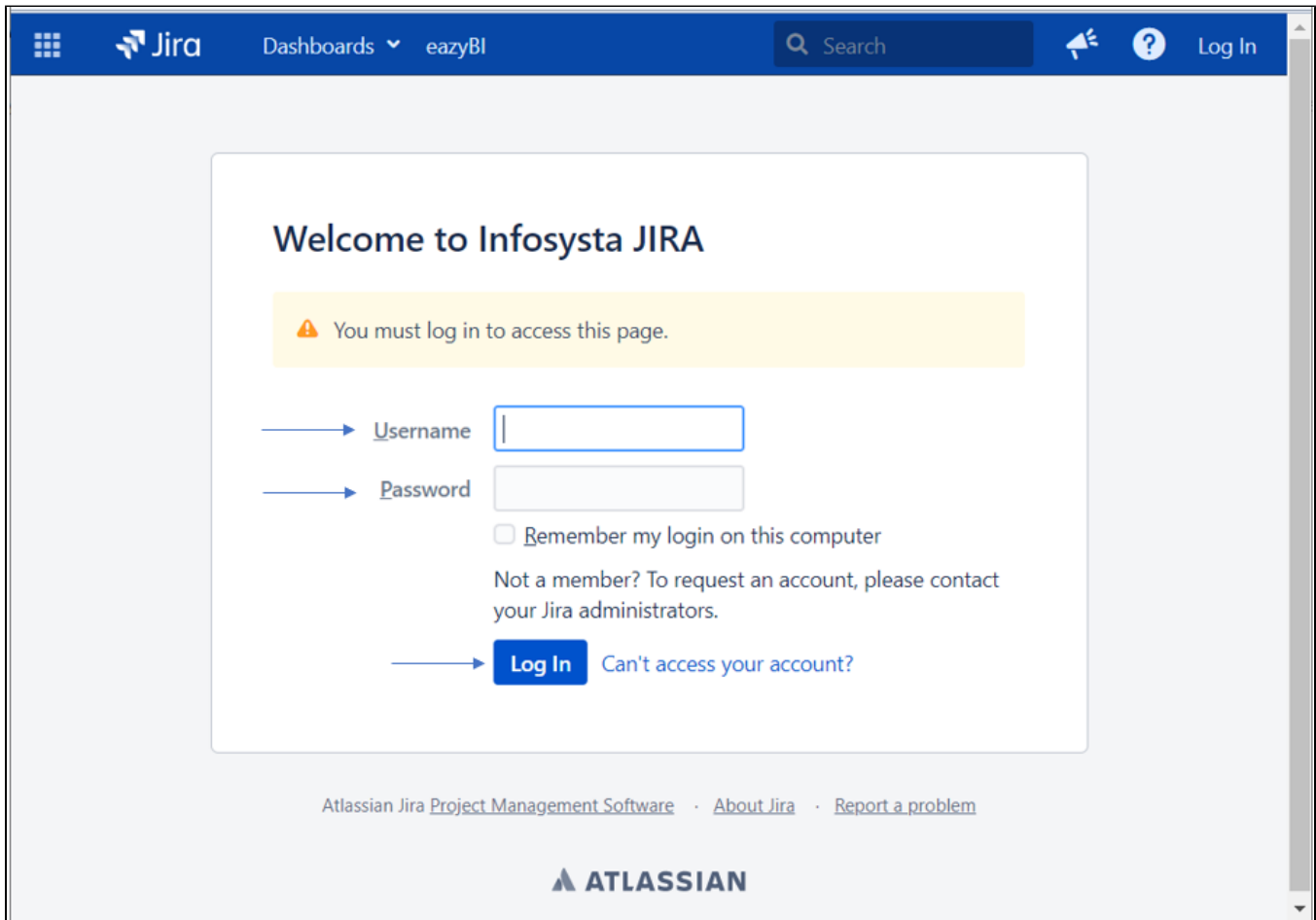
Your Jira Instance includes Jira Service Management GTJ Jira Extension now supports logging in as customer, allowing them to raise requests, replay to agents, add an attachment, view related requests all from their inbox. Click on "Continue as Customer" to login to Customer Portal, or click on "Continue" to login as Jira user

Continue as customer

Continue

- You'll be redirected to the following page
- Enter your **Username** and **Password**
- Click on **Login**

 To be redirected to the following OAuth 1.0 login screen, **Application link** should be configured in your Jira admin side.
To configure your application link follow this [guide](#).



The screenshot shows the Jira login interface. At the top is a blue navigation bar with the Jira logo, 'Dashboards' with a dropdown arrow, 'easyBI', a search bar, and a 'Log In' button. The main content area has a light gray background. In the center is a white box with the heading 'Welcome to Infosysta JIRA'. Below the heading is a yellow warning box with an orange triangle icon and the text 'You must log in to access this page.' Underneath the warning box are two input fields: 'Username' and 'Password', each preceded by a blue arrow. Below the 'Password' field is a checkbox labeled 'Remember my login on this computer'. Further down is the text 'Not a member? To request an account, please contact your Jira administrators.' At the bottom of the login box is a blue 'Log In' button with a blue arrow pointing to it, and a link 'Can't access your account?' to its right. At the very bottom of the page, there is a footer with the text 'Atlassian Jira Project Management Software' followed by links to 'About Jira' and 'Report a problem', and the Atlassian logo.

Username

Password

☐ Remember my login on this computer

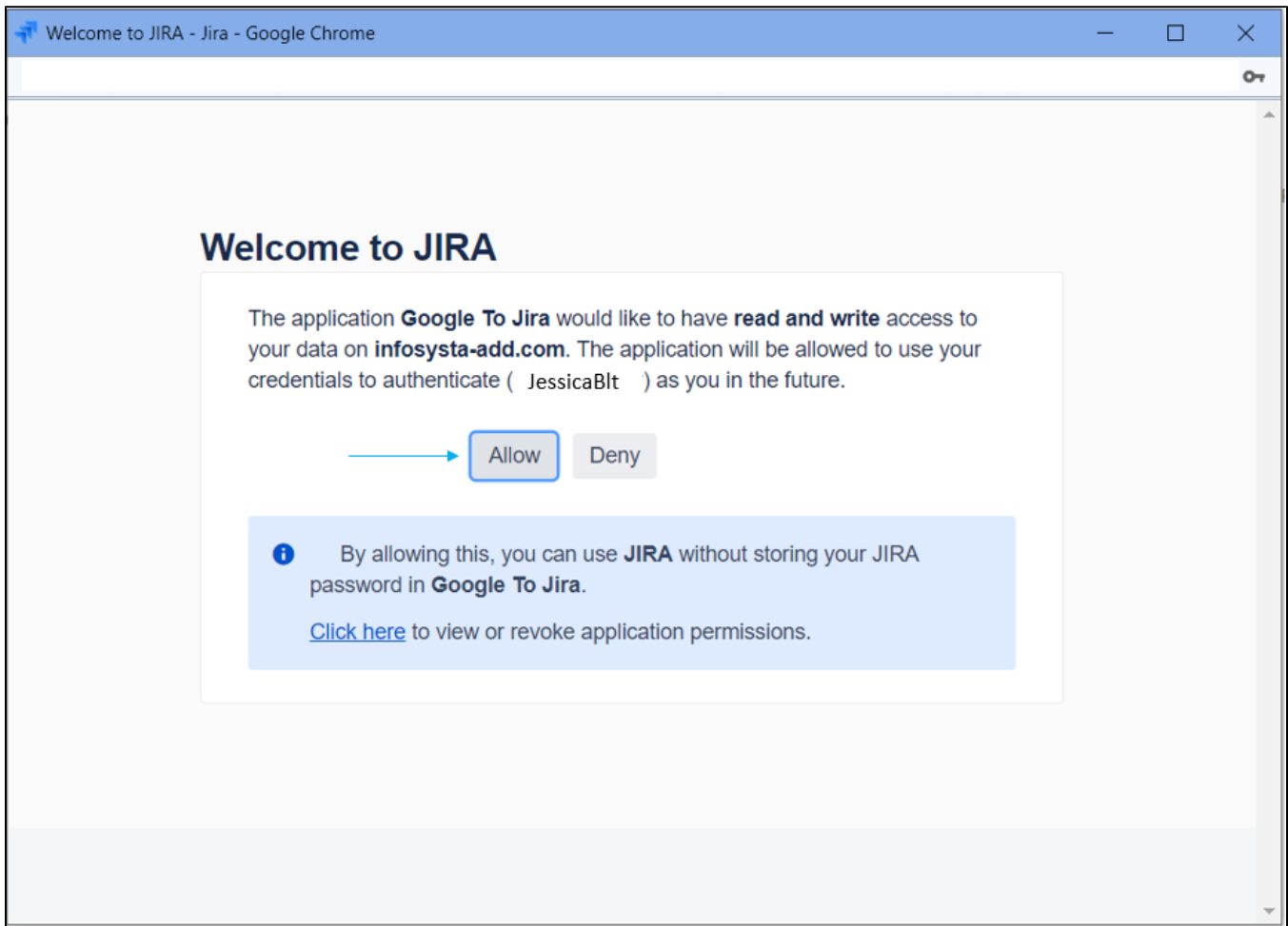
Not a member? To request an account, please contact your Jira administrators.

[Can't access your account?](#)


Atlassian Jira [Project Management Software](#) · [About Jira](#) · [Report a problem](#)

ATLASSIAN

- Click on **Allow**



- If you click on Deny; you'll be redirected to the basic login screen


 If **Application link** isn't configured in your Jira admin side OR you clicked on **Continue as Customer**, you'll be redirected to the basic login.

Basic Login

- Once you're redirected to the following basic login page
- Enter your **Username** and **Password**
- Click on **Login**

GTJ - Login - Google Chrome

GTJ Jira Extension | chrome-extension://mkfhgagoddnhjopafgdllahamifi/index.html#/login



Integrate Jira with Google

Jira URL * ?

Not able to login? please follow this link

Username *

Password *

Continue

Great, you are now connected to Jira and ready to explore [GTJ's features!](#)

Related Content

- [How to Install the Jira Extension in Chrome](#) (Google To Jira - GTJ)
- [How to Connect Jira Extension in Chrome](#) (Google To Jira - GTJ)
- [How to Install - Jira Extension in Chrome \(Beta\)](#) (Google To Jira - GTJ)